

# **PSRREG**

Editor for Registrations-Archive of Yamaha Keyboards  
PSR-740, PSR-2000, PSR-8000, PSR-9000, 9000Pro, Tyros  
and the CVP-200 Series

## PSRREG

Editor for registration-archives of YAMAHA keyboards  
PSR-740, PSR-2000, PSR-8000, PSR-9000, 9000Pro, Tyros, CVP-200 Series

### **Introduction**

Modern Yamaha Keyboards offer the function to store a lot of different panel settings into the memory of the instrument. These can be retrieved by clicking one or two buttons. We can assign a name, usually a songname, to each of these so called registrations with the purpose to identify the registration. Each registration has sufficient memory to store several pieces of information, for instance the selected style and the voices of each melody part.

With a panel SAVE-function, we can create an archive of registrations on the hard disk or a floppy disk and can retrieve it by a corresponding LOAD-function. Existing registrations of the memory will then be overwritten. Thanks to the archiving function, the musician can store and use a unlimited number of registrations.

Managing a high number of registrations in different archives often causes problems. With a song to be played, the musician has look for the correct archive and select the appropriate memory-bank- and the place in the bank. He cannot get any help by the keyboard at this time. In the progress and the stressed situation of an musical event, it may be troublesome to load archives before playing the next song. In this case, it would be comfortable to be able to create an special archive for each event where the registrations are placed in the right order. We cannot perform this with functions of keyboards today.

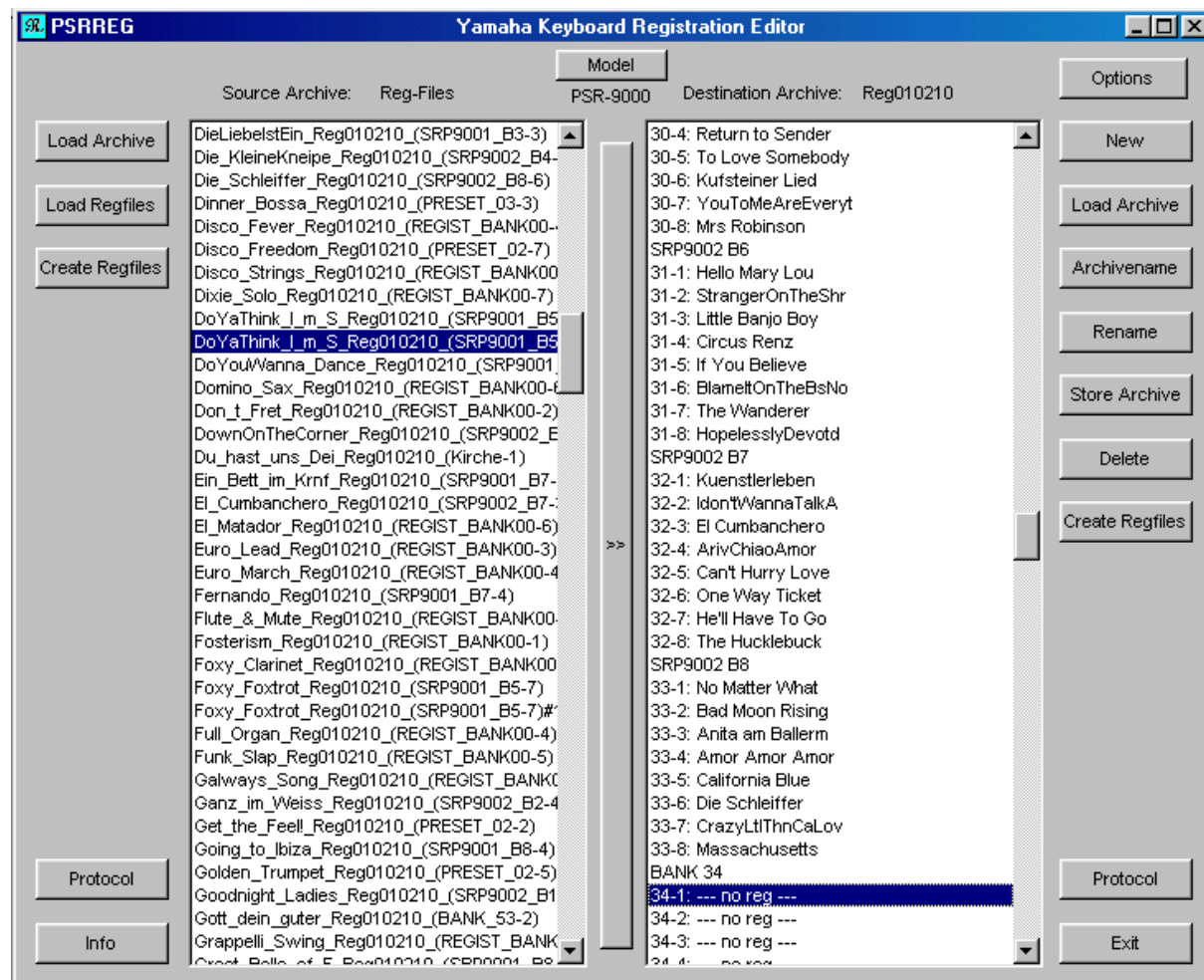
Such requirements are reasons to develop the computer program PSRREG.

### **The Functions of PSRREG**

1. Loading registration archives, created by the Yamaha keyboards.  
The registrations will be displayed in an window, ordered by bank-numbers or bank-names and place-number.
2. Displaying properties of the registration
3. Creating a protocol-file of a registration archive.  
We get a list of the registrations with registration-names (song), styles, bank- and place-numbers, tempo and voices and other properties. The format of the protocol-file is htm or txt. The files can be loaded with Microsoft Word or Microsoft Excel afterwards to extend the protocol or to get a better layout. Using browser-software like Microsoft Internet Explorer or Netscape, we can display the htm-file on the monitor and send it to the printer.
4. Creating, loading and protocolling all reg-files of a PC-directory.  
PSRREG includes the function to store all registrations of a loaded archive into separate reg-files of a directory. The names of a reg-file is built by the registration-name, sometimes the archive-name, the bank-number or bank-name and the place-number of the registration is added. The reg-files have got a special structure; therefore we can create and use these with PSRREG only. It is possible to create the reg-files from more than one archive into the same directory. With this method we get an archive for all our registrations. All the registrations of an archive of reg-files are loaded into PSRREG with one action. The registrations are listed on the screen in alphabetical order and therefore it is easy to locate a song. The protocol-function creates a htm- or text-file with a table of all registrations with filename, style, tempo, voices and other properties in each line.
5. Copying of a selected registration of an registration-archive or a reg-file-archive on a selected position of another registration-archive.
6. On some keyboard-models all registrations of a selected bank can be copied. The destination archives are allowed to be empty. If there is a non-empty registration in the destination, it will be overwritten.

7. Deleting registrations or all registrations of a bank on selected positions of a registration-archive.
8. Changing the archive-name, bankname (if it exists) and registration-name.
9. Additional functions for PSR-2000, Tyros and the CVP-200 series.
10. Creating a new registration-archive, which can be loaded with the keyboards.

## Instructions



The window of PSRREG is divided into two parts. On the left side (source), we find the source registration-archive or the source reg-file-archive. The right side (destination) is used by the destination registration-archive. All actions with the source do not change its data, manipulation is allowed with the destination registration-archive only. Starting PSRREG, source and destination are empty.

With the button „Model“ we select the model of the keyboard. In the picture above the model is the PSR-9000.

With the buttons of the left (source) side the following actions can be done:

- Loading source registration-archives (Load Archive)
- Initializing the list (New),
- Loading source reg-file-archives (Load Regfiles)
- Creating the reg-files of loaded source registration-archives (Create Regfiles)
- Protocolling all registrations of the source (registration-archive or reg-file-archive) in a htm- or text-file (Protocol).

With the buttons of the right (destination) side the following actions can be done:

- Loading destination registration-archives (Load Archive),
- Loading an empty destination registration-archive (New),
- Changing the archive-name of the destination registration-archive (Archivename),
- Changing the registration-name or bank-name, if it is displayed (Rename),
- Storing the destination registration-archive with keyboard conform structure on the disk (Store Archive),
- Deleting a selected registration or all registrations of a selected bank of the destination registration-archive (Delete),
- Creating the reg-files of the destination registration-archive (Create Regfiles) and
- Protocolling the destination registration-archive into a htm- or text-file (Protocol).
- Applying model-specific functions

A double click on a registration-name or reg-file-name opens a window with the properties of the registration or reg-file.

End the program using the „Exit“ button.

To copy a registration or all valid registrations of a bank from the source to the destination is performed with the following steps:

- Select a registration- or bank-name of the source by clicking with the left mouse-button.
- Select a position of the destination by clicking at the position in the destination. The position may be empty or filled with registrations.
- Touch the vertical button „>“ between both list-windows. Existing registrations in the destination will be overwritten by valid registrations of the source.

To delete a registration or all registrations of a bank in the destination registration-archive, we have to select the position in the destination window and touch (click) the button „Delete“ then.

Using the buttons „Load Archive“, „Load Regfiles“, „Store Archive“ and „Create Regfiles“, we get dialog boxes to select a directory or device. PSRREG expects with „Load Archive“ inside this directory one or more keyboard registration-archives with all appropriate files and directories. It is not possible to select an archive-directory like „<archive>.buf“ directly. We have to select 3,5“-diskette (a:) , if we want to load or save the registrations from or on a floppy disk. It is allowed to load the same registration-archive into the source and destination at the same time. It is allowed to remove the floppy if the archive is loaded. Perhaps we want to use another empty floppy then to store a new archive.

With the function „Load Regfiles“ a directory with reg-files inside must be selected. The reg-files must be created by „Create Regfiles“ into this directory before. „Create Regfiles“ is not possible on floppy disks, because the number of files is restricted there.

The function „Store Archive“ creates a new keyboard registration-archive into the selected directory or on a floppy disk. It is allowed to create a new archive into a directory or on the floppy disk which already has registration-archives. Only archives with different names can be stored into the same directory or the floppy disk. New archives on floppy disks can be loaded with the keyboard immediately. If the new registration-archive is stored into a PC-directory, all files must be copied on an empty floppy disk before.

Because PSRREG does not build new user-directories for new archives on the PC, these must be created with the Microsoft Explorer before.

Only archives of the selected keyboard model can be used; it is not possible to mix archives of different models.

Using the function protocol, we have to specify a file-name of the protocol-files, „<name>.htm“ or „<name>.txt“ are allowed only. The protocol-files can be read by Microsoft Excel, Microsoft Word or any browser-software, for instance Microsoft Internet Explorer or Netscape.

Protocol-files of type htm must be printed with browser-software like Microsoft Internet-Explorer or Netscape.

New protocol-files of type txt should be loaded with Microsoft Excel or Microsoft Word at first. To get a good layout with Word, mark the content (without the title-line) and use table-functions to transform the text to a table. The delimiters are tabstops. It is recommended to select small letters and to print in horizontal format. Sometimes it is recommendable to delete some rows of less interest. Store file with Excel- or Word-format.

## ***Custom Styles***

(not used with PSR-2000, Tyros and CVP-200 series)

PSRREG can not get the names of the custom styles with the registration archives, but there is no problem, if the custom styles are saved with the registrations in the same archive. We are able to do this with the PSR-740 and the PSR-8000 on the same floppy disk, but the PSR-9000 and the 9000 use more than one disk. With PSRREG we have options to select special methods for searching the styles. The options are selected independant for each model and a new start of PSRREG uses the last values. Source and destination use same options.

With the button „Options“ we select three switches.

- a.) „Ask for custom-style-archive“ set.  
With each loading process PSRREG asks for the path of an archive including styles.
- b.) „Implicite search for custom-style-archive“ set.  
PSRREG looks for the styles in the current archive.
- c.) „Default custom-style-archive“ set.  
PSRREG asks for a directory with an archive of styles. The names of these styles are used with each registration archive which is loaded then.
- d.) No option set.  
PSRREG does not protocol the names of any custom styles.

### Remarks:

- a.) is powerful, but it may be burdensome to select a style-archive each time. This style-archive is valid for source and destination.
- b.) is useful with PSR-740 and PSR-8000 archives, if there are styles included.
- c.) is useful with PSR-9000 and 9000Pro, if we always have the same set of flash-styles. The default custom archiv should include these styles then.

## ***Specials of Models***

### **PSR-740**

The model PSR-740 has got 32 registration-banks with 4 places (One Touch Settings OTS) in each bank. Each bank has an own bank-name and all 4 registrations of a bank are titled with this name. Renaming of a registration results in renaming of the bank. It is not possible to copy or delete all registrations of a bank with one action only.

Inside the protocol-files, we will find the voice-names of the parts L, R1 and, R2.

One or more files <archive>.usr and the directory reg with all appropriate files inside are stored within a directory or a floppy disk containing PSR-740 archives. The file disk.mng is not used; but if it is found by PSRREG, the content is checked. The file disk.mng is only created with new archives that are stored on a floppy disk or in the root-directory of partitions.

## PSR-2000

A registration-archive of the model PSR-2000 is only one file <archive-name>.S917.REG. We have to put one or more such files on the floppy disk or in a directory of the hard disk.

The archive-files assembles upto eight registrations of only one bank. The PSR-2000 displays upto ten banks. The file-names are used as bank-names. Therefore PSRREG uses the same name for archive and for the bank. If we rename the archive or the bank, both names will be changed at the same time.

We are able to load with PSRREG upto ten source-archives one after another. The destination contains one archive only. If we want to use more source-archives, the source-side must be initialized by New. If we load a second destination-archive, the old archive will be deleted before.

If we create a registration-archive with the PSR-2000, we have to select some setting-groups of registration-data: Style, Voice, TuneTrans, Scale, Harmony, Tempo, Pedal, Multi Pad, Song- or Mic.-Settings. The protocol-files show all (only type .txt) these groups with its data, if available.

The copy of registrations works as described. PSRREG has got a new copy-function too. With the button „Group Copy“ we are able to copy one or more setting-groups from a source-registration into a destination-registration. It is allowed to use an empty registration (no reg). Both registrations have to be selected before using the „Group Copy“-Button. After this we have to select the groups we want to copy into the registration of the destination side. Existing groups are overwritten, non-existing groups will be created.

The function „Options“ is not available, because there are no problems with custom styles for the model PSR-2000.

## PSR-8000

The model PSR-8000 has got 16 none-named registration-banks with 8 places in each bank. Therefore only renaming of registrations is allowed and it is not possible to copy or delete all registrations of a bank with one action only.

Inside the protocol-files, we will find the voice-names of the parts Left, Right 1, Right 2 and Lead.

One or more files <archive>.usr and the directory reg with all appropriate files inside are stored within a directory or a floppy disk containing PSR-8000 archives. The file disk.mng is not used; but if it is found by PSRREG, the content is checked. The file disk.mng is only created with new archives that are stored on a floppy disk or in the root-directory of partitions.

## PSR-9000 and 9000Pro

These keyboards have got 64 registration-banks with 8 places in each bank. Each bank can be identified by a name. Only one action is needed to copy or delete all registrations of a bank. The names of registrations and banks can be changed. In the protocol-files we find the voice-names of the parts Left, R1, R2 and R3.

Because the names of the styles in the flash-memory are unknown, a style-name is denoted by the group and the number of the flash-style-part.

PSRREG only works with archives which are created with the function BACKUP and not with the function SAVE TO DISK. New Archives must be loaded with RESTORE and not with LOAD FROM DISK.

A directory or device or a floppy disk with archives of the PSR-9000 and 9000Pro contains one or more directories „<archive-name>.buf“ with the file „reg.bup“ inside. Loading archives with the file-extensions „.b01“ and „.b02“ is possible, but PSRREG creates only „.buf“ files. The file disk.mng should not be found there; but if it exists, the content will be checked by PSRREG. A file disk.mng is only created, if we create archives on a floppy-disk or in the root-directory of partitions.

## Tyros

A Tyros registration-bank is a file <bank-name>.Snnn.RGT, nnn are the three numbers an Tyros-Icon. The part .Snnn is missed sometimes. We have to put one or more such files on a floppy disk or into a directory of the PC hard disk. With an existing USB-connection the hard disk of the Tyros can be addressed. Each registration-bank assembles upto eight registrations.

A registration-archive is a set of one or more registration-banks. PSRREG is able to load and to display archives with upto 512 registration-banks into the source- and the dest-side. Loading is performed step by step or with only one action. Archive-names are not connected with registration-archives.

To load an archive on the source or dest side, we first have to choose the folder containing the registration-banks. Then we have to select one or more registration-banks with the left mouse button. We may apply Shift+click or Strg+click to select more than one bank. If there are non-empty banks on the source or dest side, we can add more banks with further actions „Load Archive“.

Loading registration-banks, which are converted from PSR-8000 or PSR-9000 banks, we often get a message, that voices do not exist on the Tyros. The keyboard plays similar voices of the XG-Bank 0 instead, but it is recommended. to revoice with existing voices. With the button "Default Revoice" PSRREG will perform this for melody voices (MSB = 0).

With double-click on a bankname, the properties sequence, sequence end and the icon are displayed. With double-click on a registrationname or a regfile all properties are displayed: Style,Voices, Tempo,... and the icon. With two long clicks on bank- or registrationname the edit-window to change the name is opened.

The buttons „New“ clears the source or dest side. On the source side we get one empty bank; on the dest side we get as many empty banks as we actually have loaded on the source side.

If we create a registration-bank with the Tyros, we have to select some setting-groups of registration-data: Style, Voice, Multipad, Tempo, TuneTrans, Scale, Harmony, Pedal, Song, Mic. Settings, Line Out. The protocol-file of PSRREG show all these groups with its data, if available. Styles, multipads and songs from the hard disk, floppy disk or the flash memory are displayed with the path of the files. The device-name C: stands for the hard disk, A: for the floppy disk and E: for the flash memory, F:, G:,... for other partitions of the hard disk. .

The copy of registrations works as described. With the button „Group Copy“ we are able to copy one ore more setting-groups from a source-registration into a destination-registration. It ist allowed to use an empty registration (--- no reg ---) of the destination. Both registrations have to be selected before using the „Group Copy“-Button. After this we have to select the groups we want to copy into the registration of the destination side. Existing groups are overwritten, non-existing groups will be created. With „Style“ the „Left“ voice will be copied implicitly.

To apply the function „Edit Sequence“, we have to select a bankname. The bank must have one ore more guilty registrations. We get a windows with the sequence and the type of sequence end; both can be changed. An existing sequence will be deleted, if a registration is copied or deleted in a bank.

To apply the function „Edit Icon“, we have to select a bankname or a registrationname on the dest side. The bank must have one ore more guilty registrations. We have to enter exact three numbers nnn between 0 and 9; the numbers are associated with the Icon Snnn. It is recommended, to have installed the "Voice Editor for TYROS" from the Tyros-CD on the PC. Then PSREG will find the icon-files and we can select the icon by its picture instead of the number.

If we want to store registration-banks of the dest side, we have to choose a folder. In the following list all non-empty banks of the dest side are displayed. We have to select one or more banks as described above.

With Tyros it is not possible to create HTM-protocols because of the long table-lines. The functions „Options“ and „Archivename“ are not available.

## CVP-200 Series

A registration-archive of the models CVP-200 is only one file <archive-name>.Snnn.REG, nnn are three numbers. We have to put one or more such files on the floppy disk or in a directory of the hard disk.

The archive-files assembles upto eight registrations of only one bank. The CVP-200 models display upto ten banks. The file-names are used as bank-names. Therefore PSRREG uses the same strings for the first parts for archive and bank. If we rename the archive or the bank, both names will be changed at the same time, but .Snnn must be added to the archive-name.

We are able to load with PSRREG upto ten source-archives one after another. The destination contains one archive only. If we want to use more source-archives, the source-side must be initialized by New. If we load a second destination-archive, the old archive will be deleted before.

If we create a registration-archive, we have to select some setting-groups of registration-data: Style, Voice, TuneTrans, Scale, Harmony, Tempo, Pedal, Song- or Mic.-Settings. The protocol-files show all (only type .txt) these groups with its data, if available.

The copy of registrations works as described. PSRREG hat got a new copy-function too. With the button „Group Copy“ we are able to copy one ore more setting-groups from a source-registration into a destination-registration. It ist allowed to use an empty registration (no reg). Both registrations have to be selected before using the „Group Copy“-Button. After this we have to select the groups we want to copy into the registration of the destination side. Existing groups are overwritten, non-existing groups will be created.

The function „Options“ is not available.

The structure of the registrations are almost the same as with the PSR-2000. Therefore we also can use the registration-files of the PSR-2000 here.

## Installation

PSRREG can be installed with all versions of Microsoft Windows. The screen-resolution is 800x600 or better.

When starting PSRREG the first time, the program creates a file psrreg.ini. This file is used only to remember the keyboard-model for later starts.

The program PSRREG consists of a file named psrreg.exe. We have to copy this file into any directory. A doubleclick on the file-name starts the program immediately. If we often use PSRREG, it may be convenient to get an icon on the desktop. This is performed with the following steps:

- Click with the right mouse-button on the file-name psrreg.exe.
- Use the dialog-box to create a new link. We get a new file.
- With the left mouse-button move this file onto the desktop.
- Clicking the right mouse-button on the new icon, the icon can be renamed to PSRREG.

PSRREG can simply be removed by deleting the files psrreg.exe and psrreg.ini and the icon on the desktop. After this there are no relicts of the program in Windows.

## Final Remarks

Ulrich Montag found out the data structure properties of the PSR-9000 and 9000Proarchives and gave me useful tips for the program. He tested all functions. Walter Fischlmayr (PSR-9000), Eddie Johnson (PSR-740), Robert Müller (PSR-9000, Tyros), Scott Yee (Tyros), Willibald Gilch (PSR-2000), Tino



Holzmann (PSR-2000) and Simon Safran (CVP-207) have sent registrations for tests and tried all programmed functions. The functions of other CVP200 models have not been tested. Many thanks to all friends for their engaged help.

We have not got any official data-descriptions of registration archives. Therefore it may be that the new archives sometimes do not work correctly. If the user gets some problems, it would be nice if he could contact us with the description of the problems.

### ***Copyright***

PSRREG is freeware but it is not allowed to store PSRREG on own private or commercial websites for download without permission of the programmer. Commercial firms are not allowed to deliver the software to other persons without permission.

### ***Contact***

**Programmer:** Heiko Plate, Schwaketenstr. 94,D-78467 Konstanz, Germany  
**E-Mail:** [HeikoPlate@gmx.de](mailto:HeikoPlate@gmx.de)  
**Website:** <http://www.heikoplate.de>

**Structures of the data, user-interface, test, PSR-9000:**  
Ulrich Montag, E-Mail: [u.montag@t-online.de](mailto:u.montag@t-online.de)